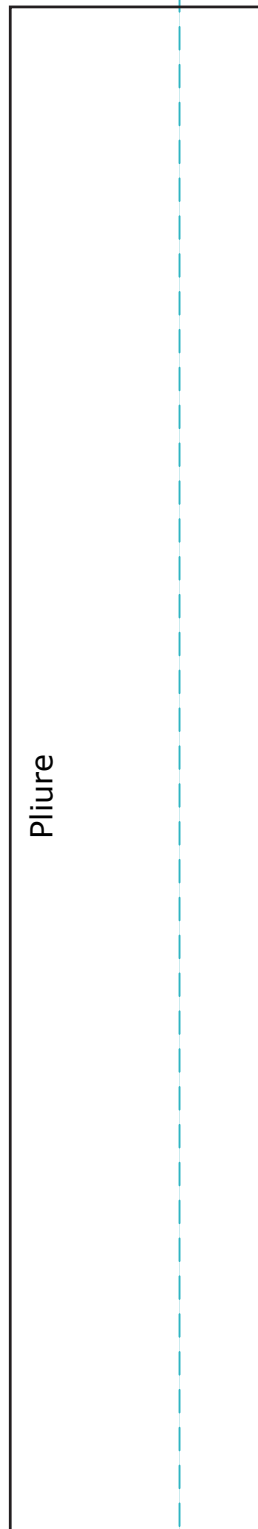
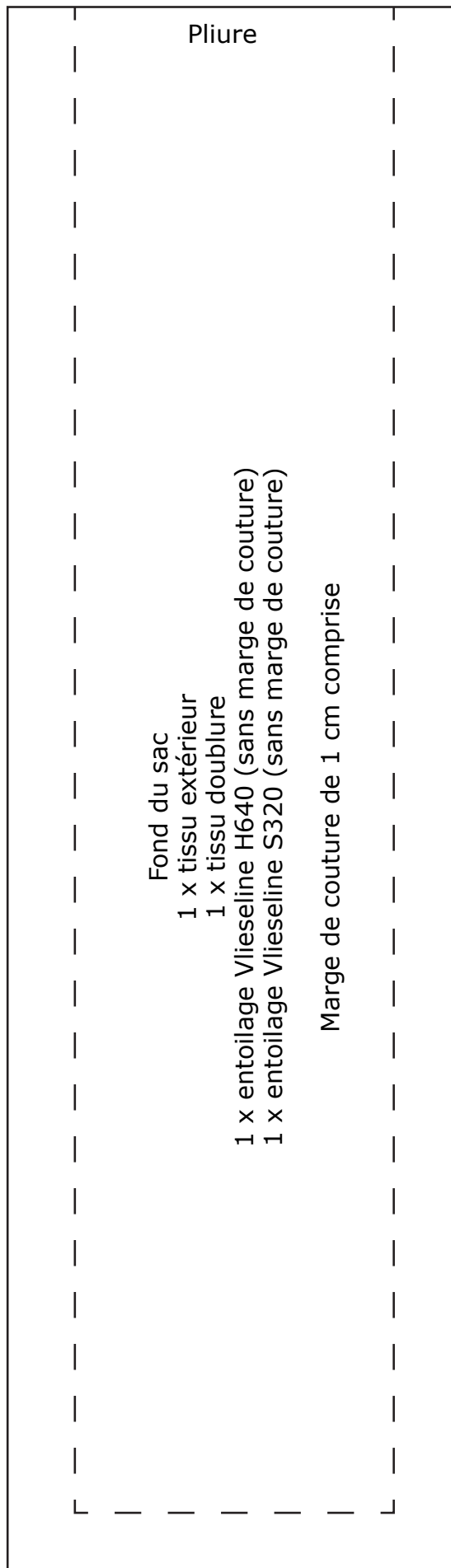
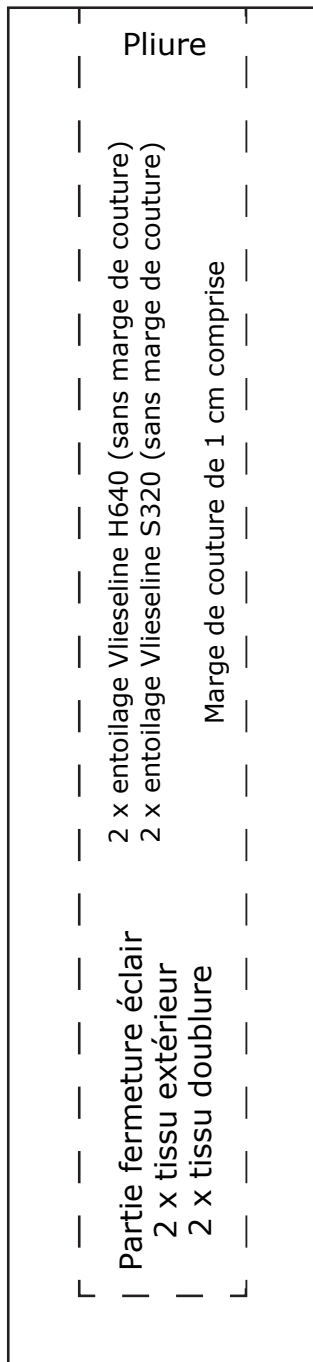


1cm

Carré de
contrôle



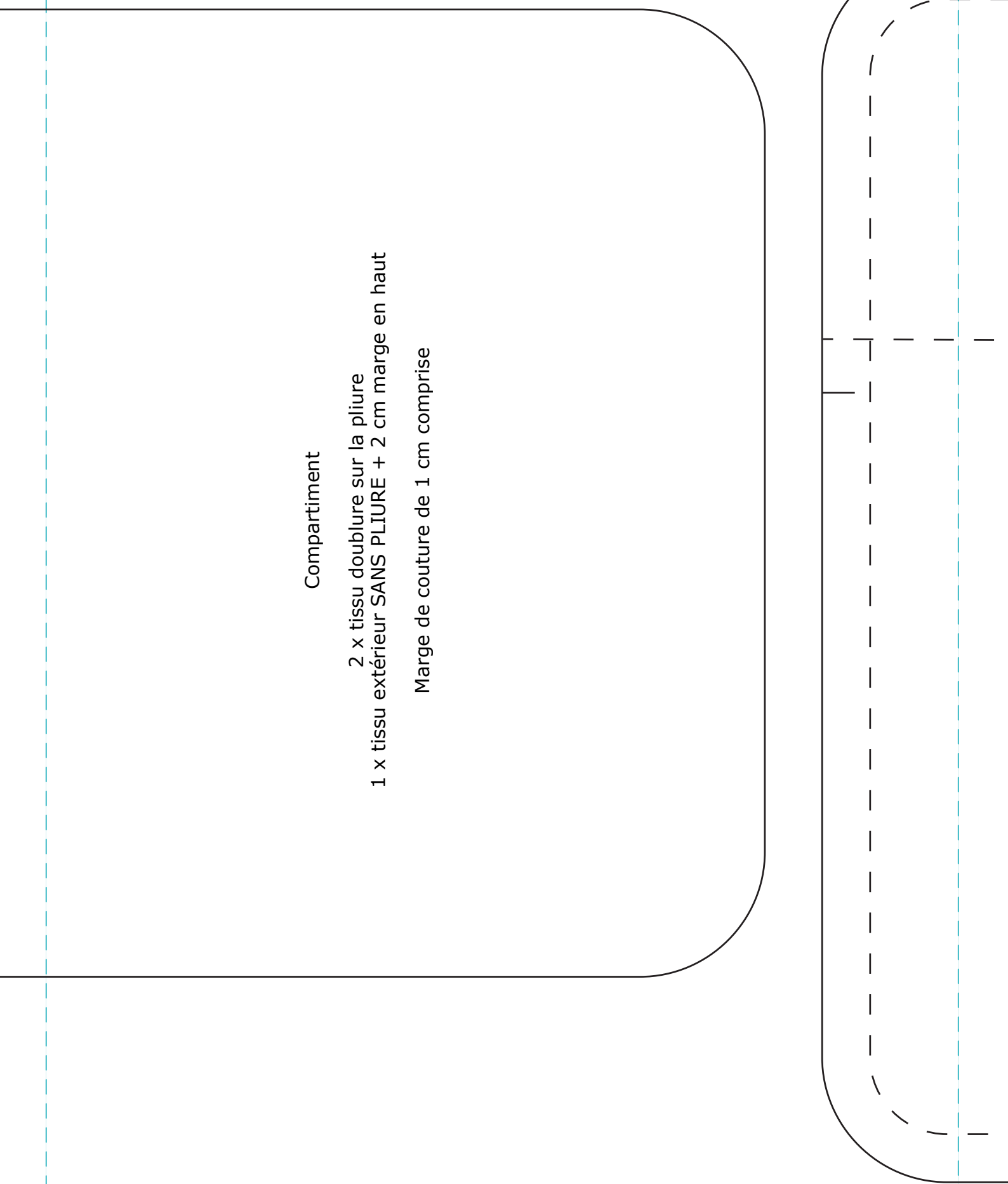
A A

Compartment

2 x tissu doublure sur la pliure
1 x tissu extérieur SANS PLIURE + 2 cm marge en haut

Marge de couture de 1 cm comprise

B B



Ligne d'attache pour les compartiments

Pochette bandoulière

Corps du sac
2 x tissu extérieur
2 x tissu doublure
2 x entoilage Vlieseline H640 (sans marge)
2 x entoilage Vlieseline S320 (sans marge)

Marge de couture de 1 cm comprise