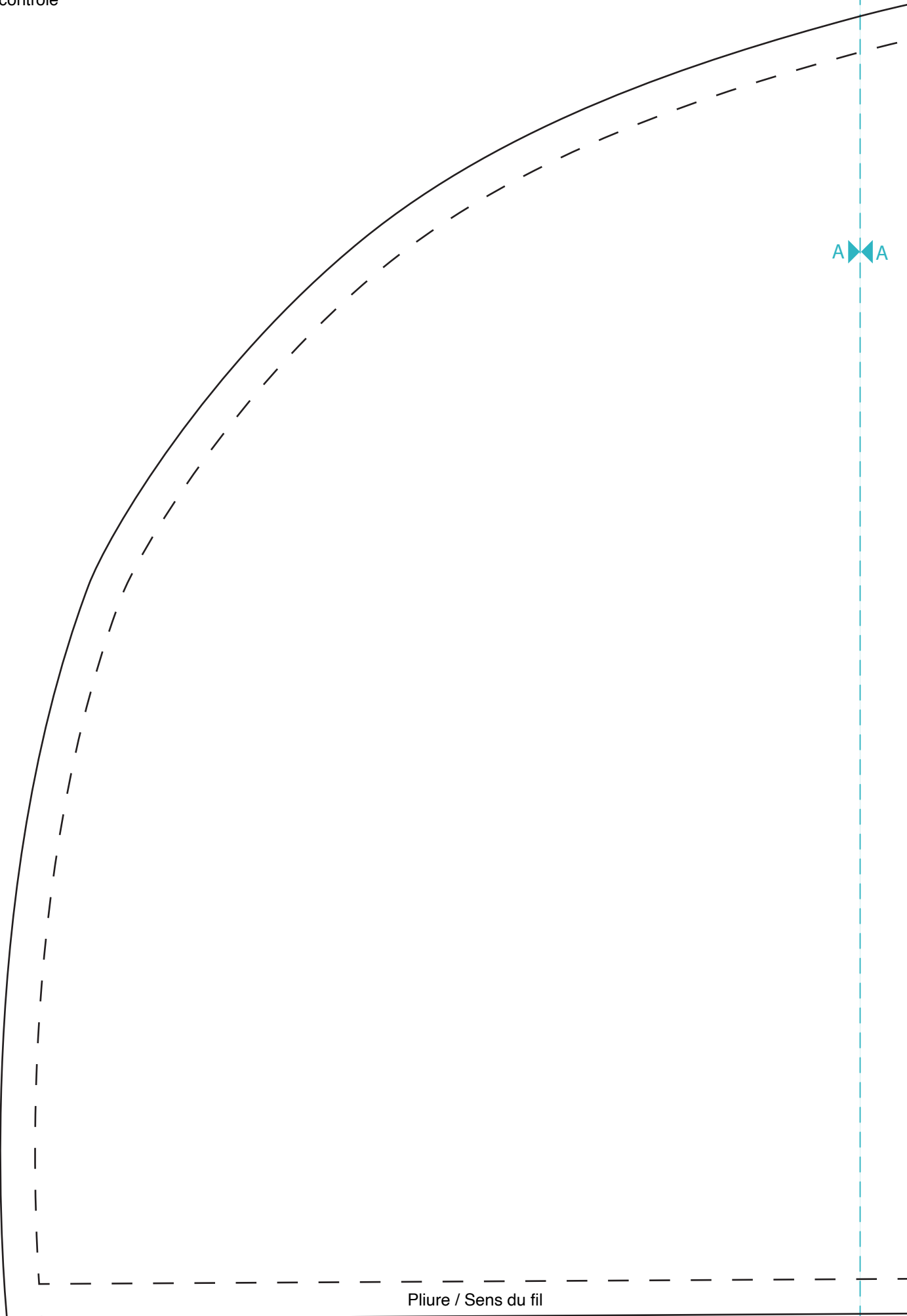


1cm

Carré de
contrôle



A A

Pliure / Sens du fil



B

Sac demi-lune

Pièce principale

2 x tissu extérieur

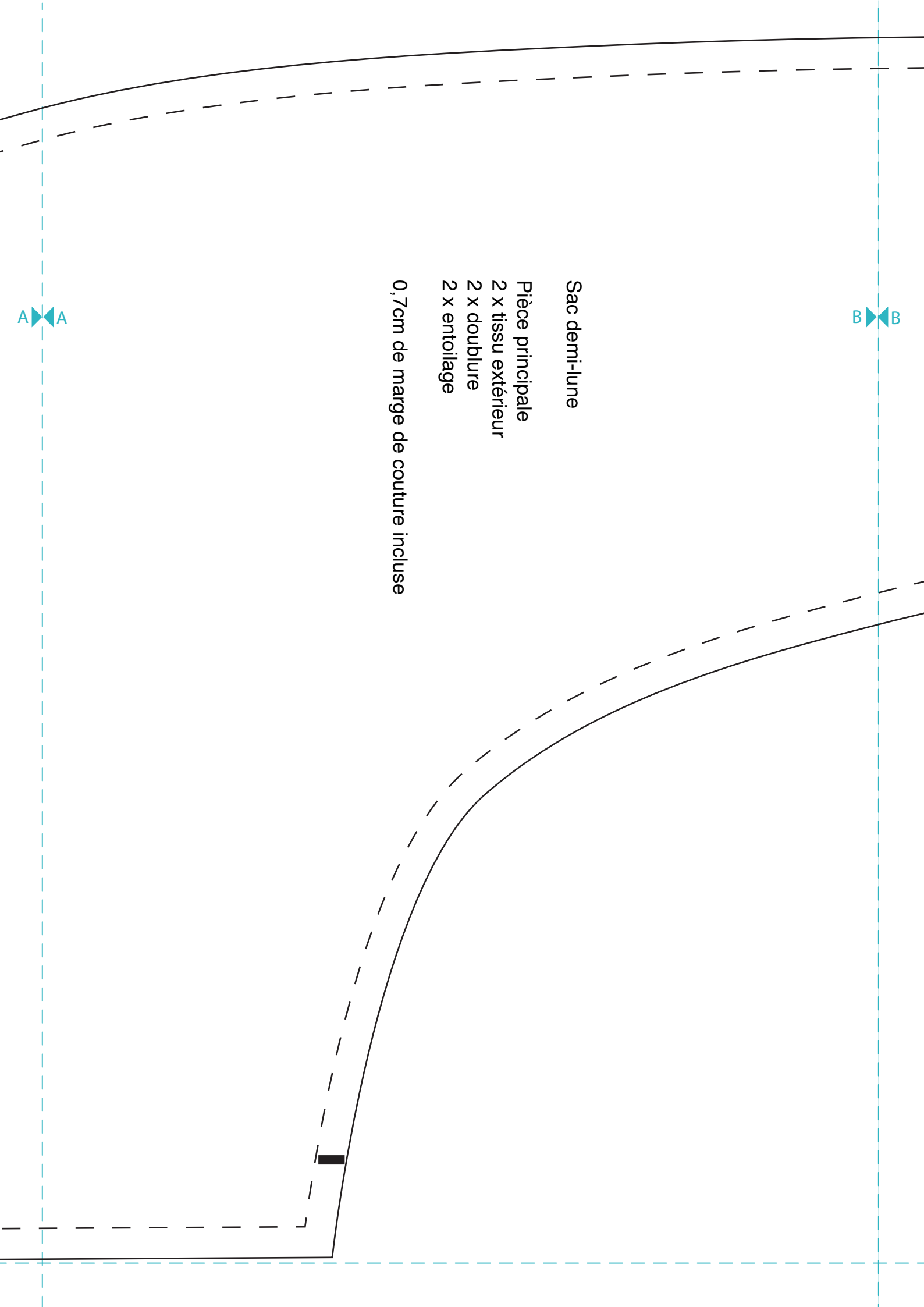
2 x doublure

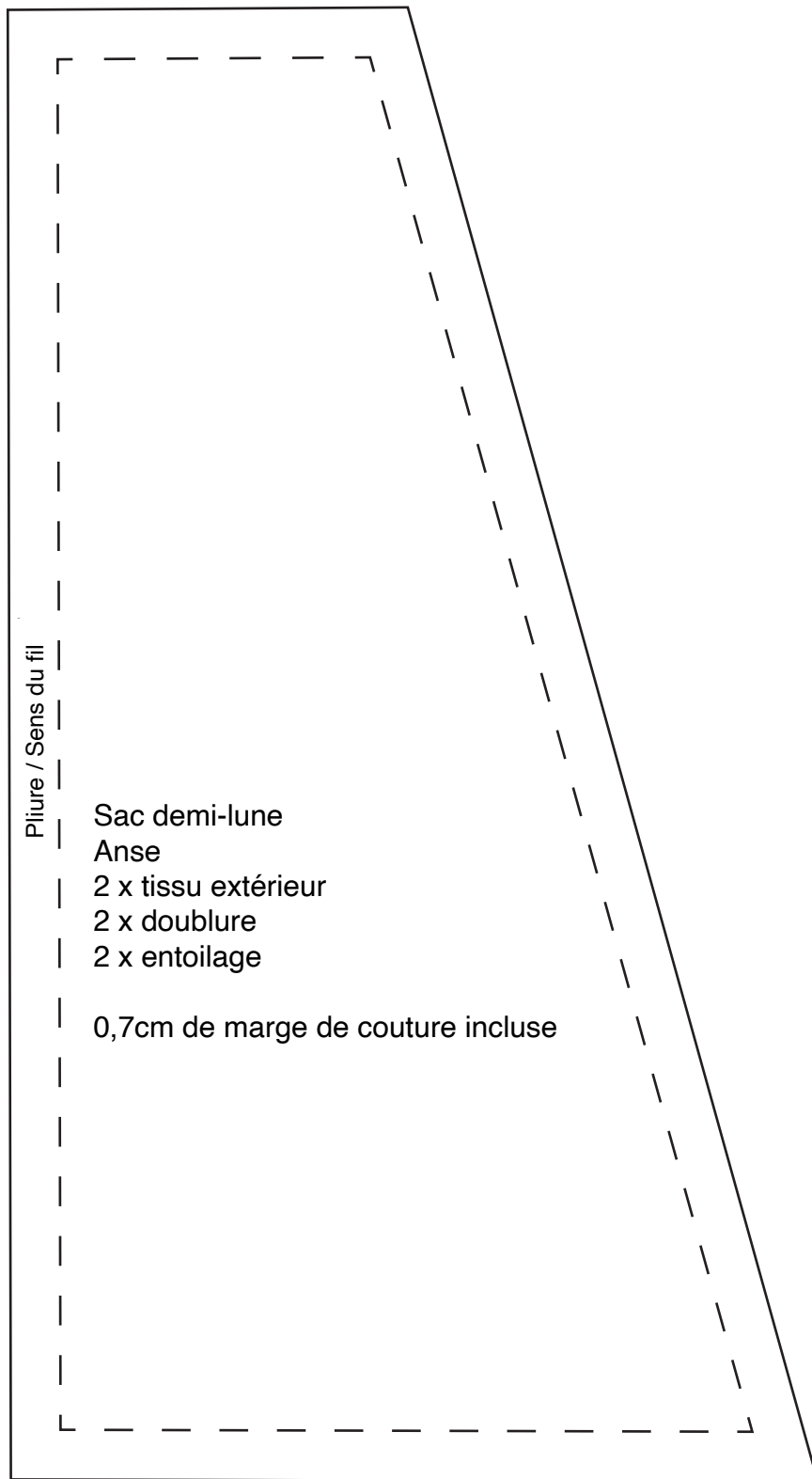
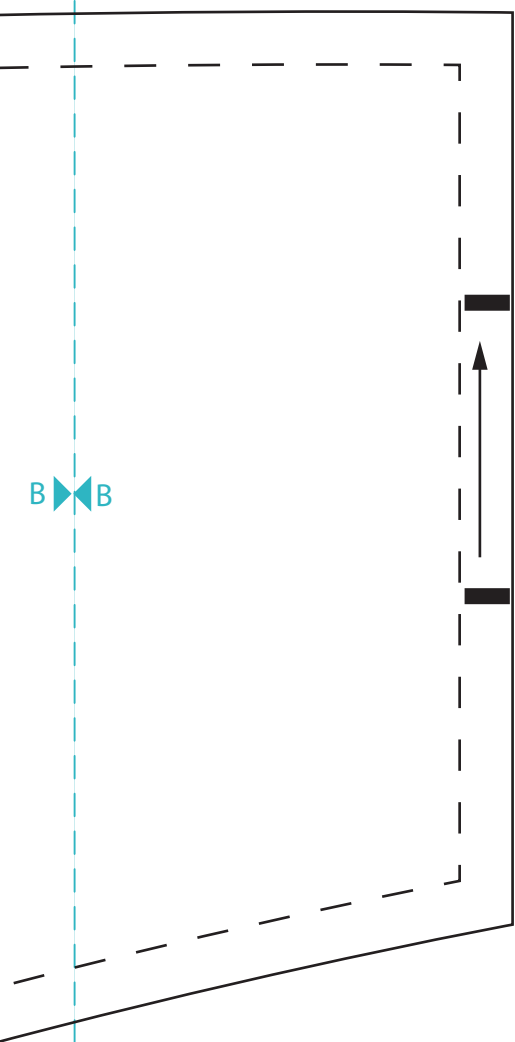
2 x entoilage

0,7cm de marge de couture incluse



A





Pliure / Sens du fil

Sac demi-lune

Anse

2 x tissu extérieur

2 x doublure

2 x entoilage

0,7cm de marge de couture incluse